

Driver Installation Under Windows 98

1. **Step 1:** Plug in the USB type A receptacle of the cable to the USB connector of your computer.
Step 2: Place the enclosed CD Driver into the CD ROM.
Step 3: Click “next” to search for new drivers for USB Device.
. See Figure 1



Figure 1

2. Select ‘ Search for the best driver for your device’ and click “next”.
See Figure 2.



Figure 2

3. Specify the CD-ROM\US-001\98~XP\WIN98_ME drive and click “next”. See Figure 3



Figure 3

4. Windows driver file will search for the device, click “next” to continue. See Figure 4

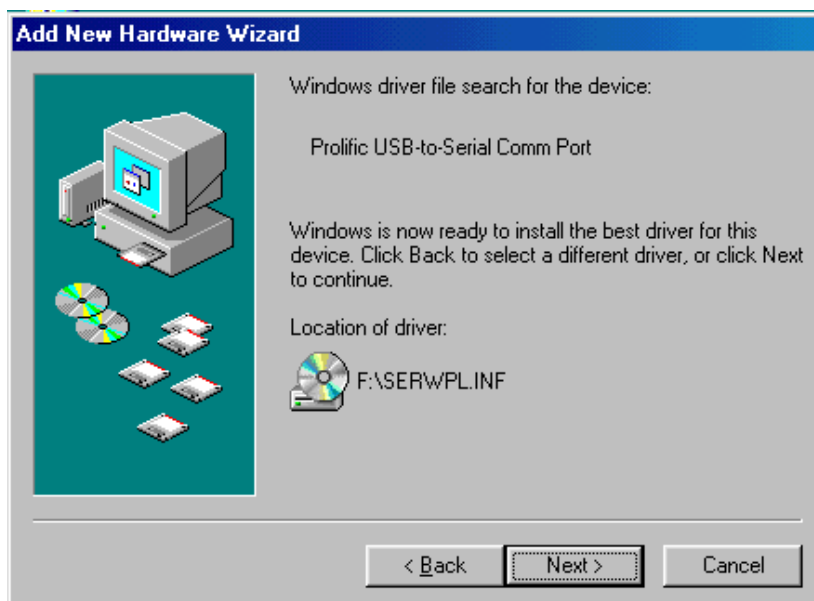


Figure 4

5. Windows has finished installing the software, click “Finish” to close the Wizard. See Figure 5



Figure 5

6. Open “ Device Manager “ under System Properties and check if There is the device you install under “ Universal Serial Bus controllers”. See Figure 6

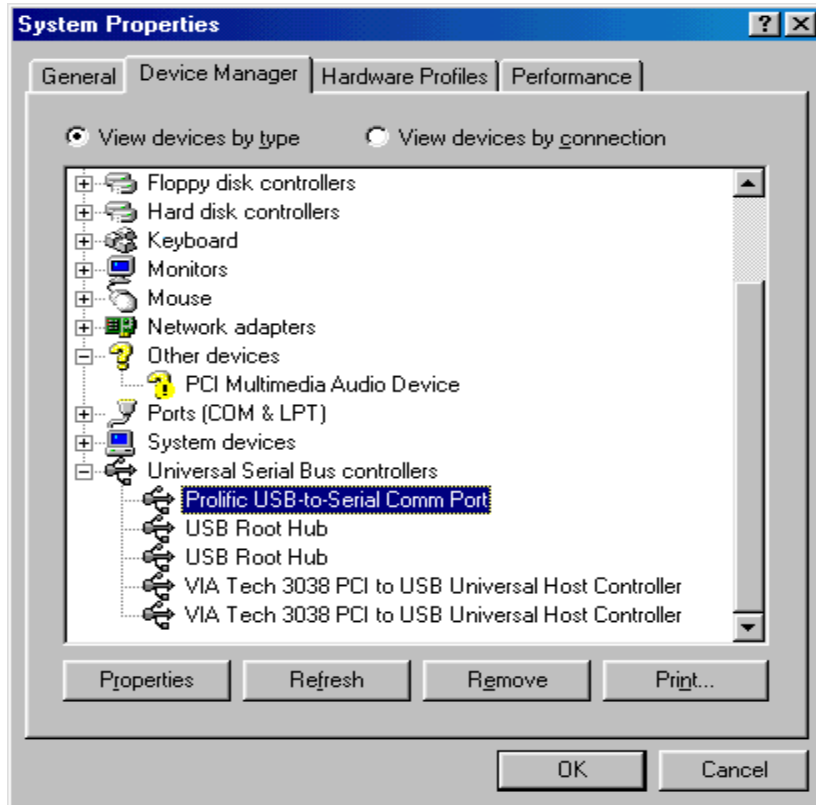


Figure 6