

Driver Installation Under Windows 2000

1. **Step 1:** Plug in the USB type A receptacle of the cable to the USB connector of your computer.
Step 2: Place the enclosed CD Driver into the CD ROM.
Step 3: Click “next” at the welcome screen. See Figure 1

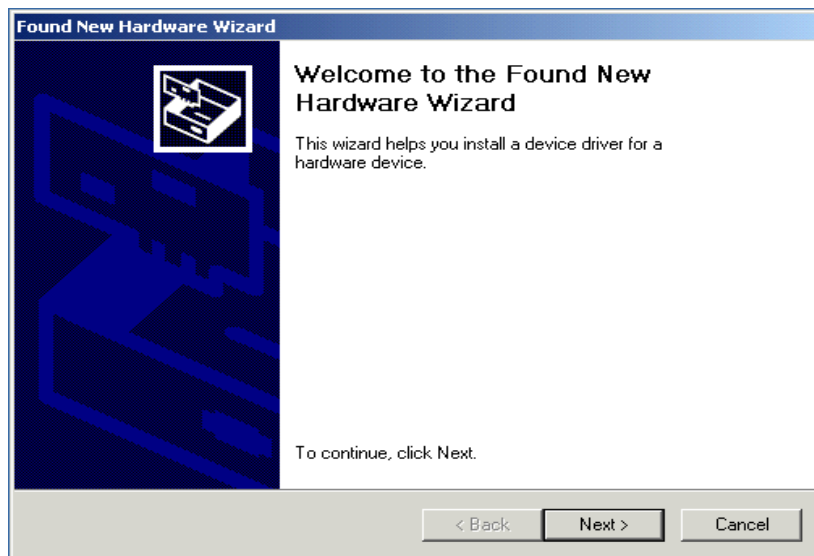


Figure 1

2. The “Found New Hardware Wizard” will install the driver automatically.
Click “next” button to search for a suitable driver (default and recommended). See Figure 2



Figure 2

3. Choose “CD-ROM” drives and click “next”. See Figure 3

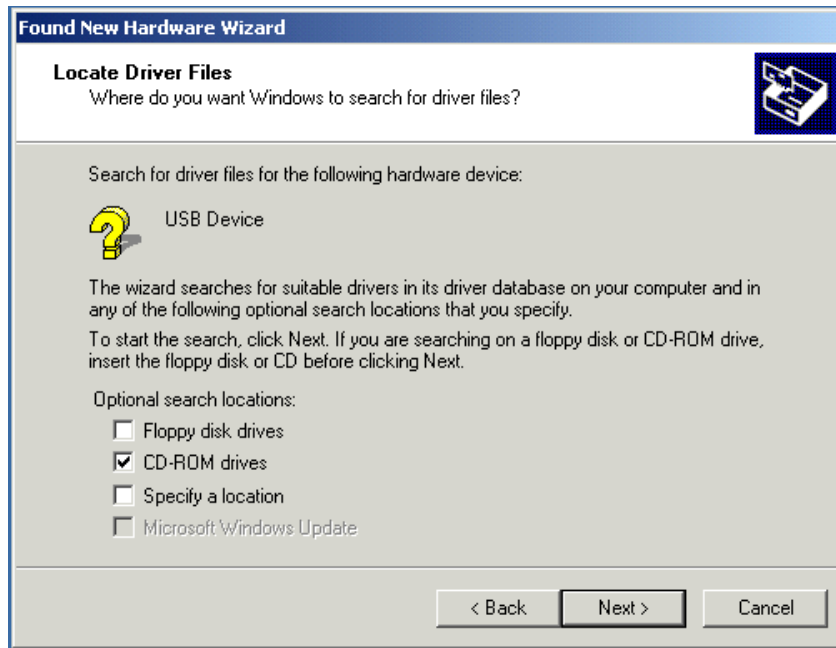


Figure 3

4. Click “next” to install the driver. See Figure 4

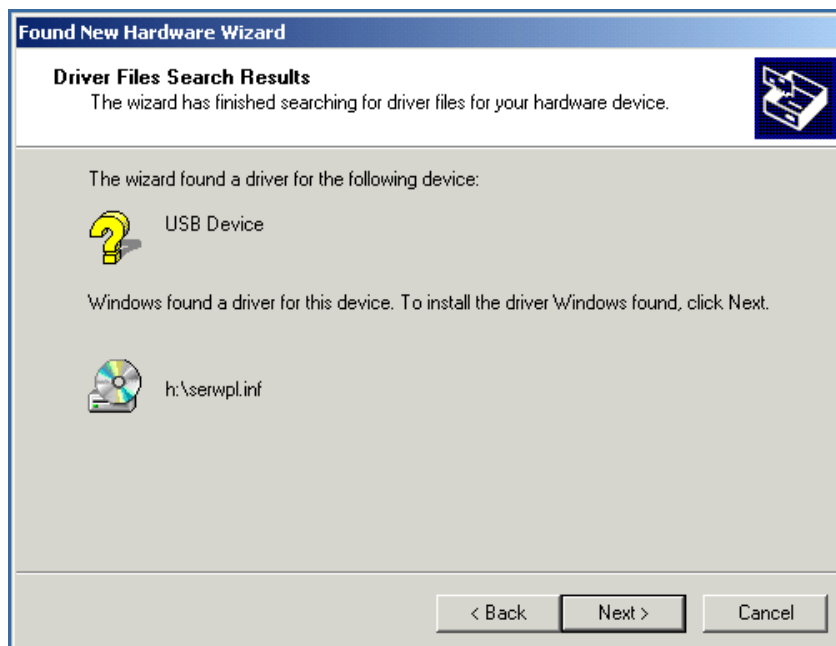


Figure 4

5. Click “ **Finish** ” to close the Wizard. See Figure 5



Figure 5

6. Double click “My Computer” →”System Properties”→”Device Manager” to make sure the device you install is correctly displayed. See Figure 6

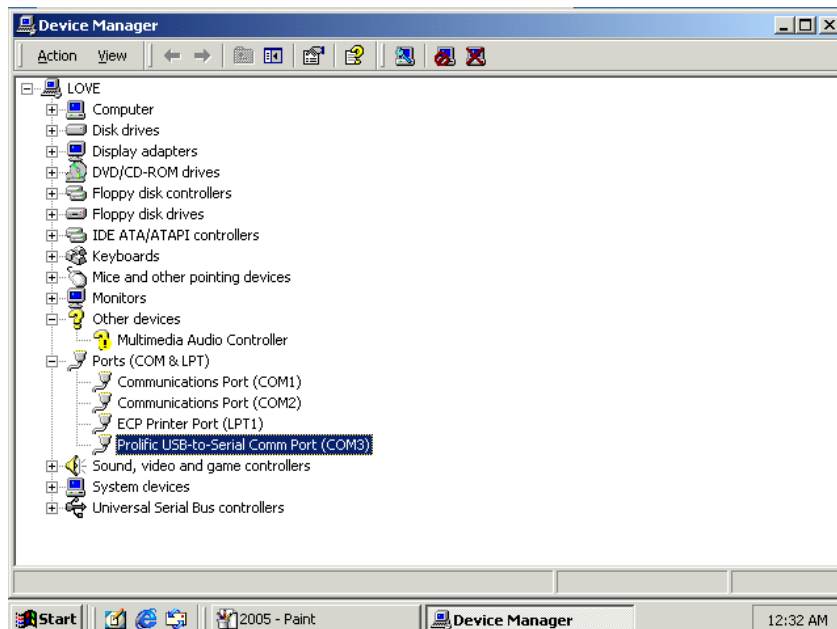


Figure 6